

# SmartClass+

## SmartClass+ Rover Mobile Language Lab Cart



# Language Lab on Wheels

SmartClass+ Rover is a complete mobile-cart based language lab that operates without computers and without cables.

SmartClass+ students use a dedicated, touch-screen based, interactive terminal that wirelessly connects with the teacher console and supports both live and self-study activities.

## The SmartClass+ Advantage

When we set about developing the new SmartClass+ platform, we focused on two main objectives:

- **Intuitive & Easy-to-Use:** Above all else, we have insisted that the system be easy for non-technical teachers to use.
- **Flexible & Cost Effective:** An equally important objective has been to provide a system that can deliver a pedagogically sound and economically viable solution.

## Hands-on Practice

Learning a second language is very much like learning to play a musical instrument. The major way to improve virtuosity is through hands-on practice.

- **Interactive, multimedia exercises:** Students interact with multimedia materials in which native speakers of the target language are communicating in authentic situations.
- **Recording exercises:** Students record themselves and listen to themselves speaking the target language – comparing their responses to a model speaker.
- **Live speaking & listening exercises:** Students converse in the target language with their fellow students in pairs or in groups – giving every student sufficient time to practice their listening and speaking skills.
- **Live testing activities:** Students are able to participate in live testing activities, such as advance placement (AP) testing to assess their progress.



## Motivation & Focus

Another major factor affecting language learning is motivation: Motivated learners accomplish more in less time.

- **Get students excited:** Language labs, with their interactive, multimedia activities, can actually get your Nintendo generation of students excited about learning.
- **Focus student attention:** Teachers are able to guide students through the learning process, and because students are running dedicated terminals rather than open computer workstations, teachers can manage the materials and applications, to which students have access.

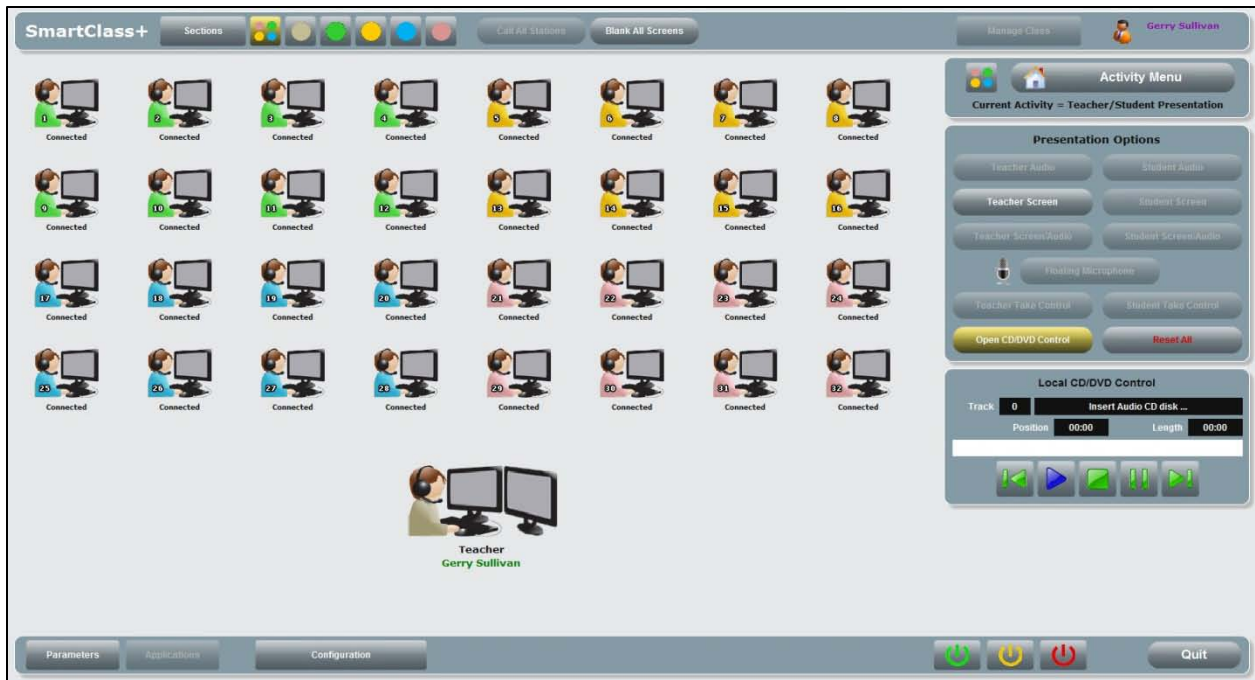
# Powerful and Easy-to-Use

## Live Activities

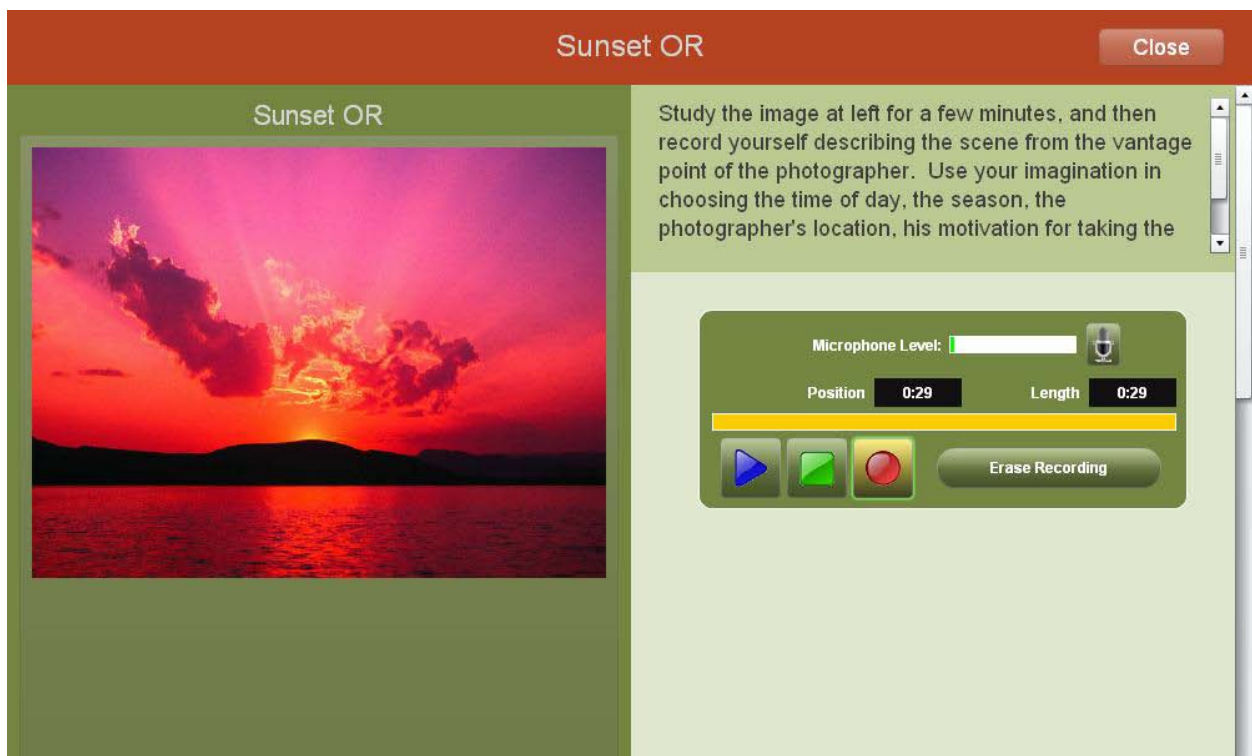
The Live Activities Dashboard is used to manage lab-based activities such as teacher & student presentations, pairing & grouping, live testing, AP testing, and student monitoring & support.

## Media Activities

The Media Activities Dashboard is used to manage self-study exercises such as open recording, simultaneous recording, sequential recording, open text, question & answer, multiple-choice, and fill-in-the-blanks.



Instructors' Live Activities Dashboard (LAD)



Students' Media Activities Dashboard (MAD)

# SmartClass+ Rover Technical Description

## Teacher Station

The teacher station, which is housed in the mobile cart, comprises a single Windows-based computer with dual high-resolution, widescreen LCD displays.

The Control Screen is dedicated to running the Live Activities Dashboard, which is used by teachers to orchestrate *live* activities such as presentations, pairings, and tests.

The Teacher screen displays standard Windows applications, and can be used for building self-study exercises for students and for reviewing student responses to those exercises.

## Interactive Student Terminals

Student terminals use a bright LCD display (7" or 10" models) with LED backlighting and an integral touch-screen interface.

The terminals operate using an internal high-capacity battery for up to 10 hours between charging.

## Wireless Connectivity

SmartClass+ Rover uses a dedicated WiFi network connection to communicate between the teacher console and student terminals.

Robotel's new WiFi signal management algorithm ensures excellent sound and image quality and detects and restores network dropouts in a seamless and transparent fashion.

The system's internal router can optionally be connected to the school's data network to give teachers access to the SmartClass+ Rover central database from any computer on the school's network.

## Mobile Cart

The mobile cart houses the teacher console, a media storage system, wireless networking equipment, and lockable storage space for up to 36 student terminals & headsets. The cart includes rapid charging support for all student terminals.

Teacher Station



Student Terminals

